



Jannock Penwerris Rise, Praa Sands, TR20 9TD

£475,000 Freehold

CHRISTOPHERS
ESTATE AGENTS

Jannock Penwerris Rise

- DETACHED FOUR BEDROOM PROPERTY
- PEACEFUL AND SECLUDED SPOT
- HIGHLY SOUGHT AFTER COASTAL VILLAGE
- GENEREOUS PLOT WITH SECLUDED GARDENS
- AIR SOURCE HEATING AND SOLAR PANELS
- FAMILY OR ACTIVE RETIREMENT HOME
- USEFUL TIMBER SHED
- FREEHOLD
- COUNCIL TAX C
- EPC C-73

Tucked away in a peaceful and secluded spot within this highly sought-after coastal village, this detached four bedroom property enjoys a generous plot with secluded gardens and an attractive outlook featuring both rural and distant coastal views.

The accommodation includes a welcoming and light kitchen/breakfast room, a cosy sitting room, and a bright sunroom that opens onto the deck — perfect for entertaining or relaxing as an additional reception space. There are four bedrooms, with the master being particularly impressive, featuring double doors opening directly onto the deck and taking full advantage of the fantastic rural views.

The property benefits from air source heating and solar panels, along with a family bathroom. Offering excellent potential, it would make a fine family or active retirement home, with plenty of scope to further enhance and create a truly dream home in a special location.







THE ACCOMMODATION COMPRISES (DIMENSIONS APPROX)

Door to:

A DOOR TO THE KITCHEN/BREAKFAST ROOM

KITCHEN/BREAKFAST ROOM 15'3" x 10'3" (4.65m x 3.12m)

A lovely triple aspect room with a breakfast area offering an attractive view over the garden to the countryside beyond. The kitchen area is fitted with a range of base and wall units with worksurfaces over and an eye level Neff oven and microwave. There is space and plumbing for a washing machine, an integrated dishwasher and induction hob with filter and light over. Solid fuel Rayburn (not tested), radiator, window to the rear overlooking the garden and a door to the hallway.

HALLWAY

With radiator, plant cupboard, loft access and doors to various rooms.

LOUNGE 13'3" x 9'9" (4.04m x 2.97m)

A cosy room with fitted carpet, radiator and dump radiator from the Rayburn, borrowed light window to the sun room.

SUN ROOM 14'3" x 12'8" (4.34m x 3.86m)

A wonderful versatile space which has been used as a dining room and games room by the present vendors. With windows to the rear and both sides offering a lovely rural view and double doors opening onto the deck.

BEDROOM ONE 14'5" x 12'7" (4.39m x 3.84m)

A fantastic master bedroom with a light and airy feel with fitted carpet, radiator and sliding doors with side screens to the deck. A really lovely space in which to relax and perhaps enjoy a leisurely coffee on a Sunday morning whilst enjoying the view.

BEDROOM TWO 14'4" x 6'7" (4.37m x 2.01m)

With a fitted carpet, radiator and a window to the rear.

BEDROOM THREE 10'8" x 8'8" (3.25m x 2.64m)

With a radiator, a window to the rear and a fitted carpet.

BEDROOM FOUR 8'5" x 6'9" (2.57m x 2.06m)

With a radiator, a window to the rear and carpet.

BATHROOM 6 x 5'5" (1.83m x 1.65m)

With tiled floor and walls, suite comprising of a bath with electric shower over, low level w.c. and wall mounted wash hand basin in a vanity unit. The room has a frosted window to the rear.

OUTSIDE

The property is approached by a driveway leading to a parking/turning area and a garage of sectional construction. The gardens are a real feature of the property which sits beautifully in its plot. The gardens are mainly laid to lawn and enjoy a good degree of privacy and an attractive outlook and are a blank canvas for a keen gardener. There is a useful timber shed to the rear. A fantastic feature is the raised deck, accessed from both the sun room and master bedroom which enjoys a gorgeous outlook across the surrounding countryside towards the sea. The perfect place to entertain, enjoy an al fresco supper or simply relax listening to the waves rolling onto the shore in the distance.





SERVICES

Mains water, electricity and private drainage. Air source heating and owned solar panels.

MOBILE AND BROADBAND

To check the broadband coverage for this property please visit -

<https://www.openreach.com/fibre-broadband>

To check the mobile phone coverage please visit -

<https://checker.ofcom.org.uk/>

COUNCIL TAX

Council Tax Band C.

ANTI-MONEY LAUNDERING

We are required by law to ask all purchasers for verified ID prior to instructing a sale

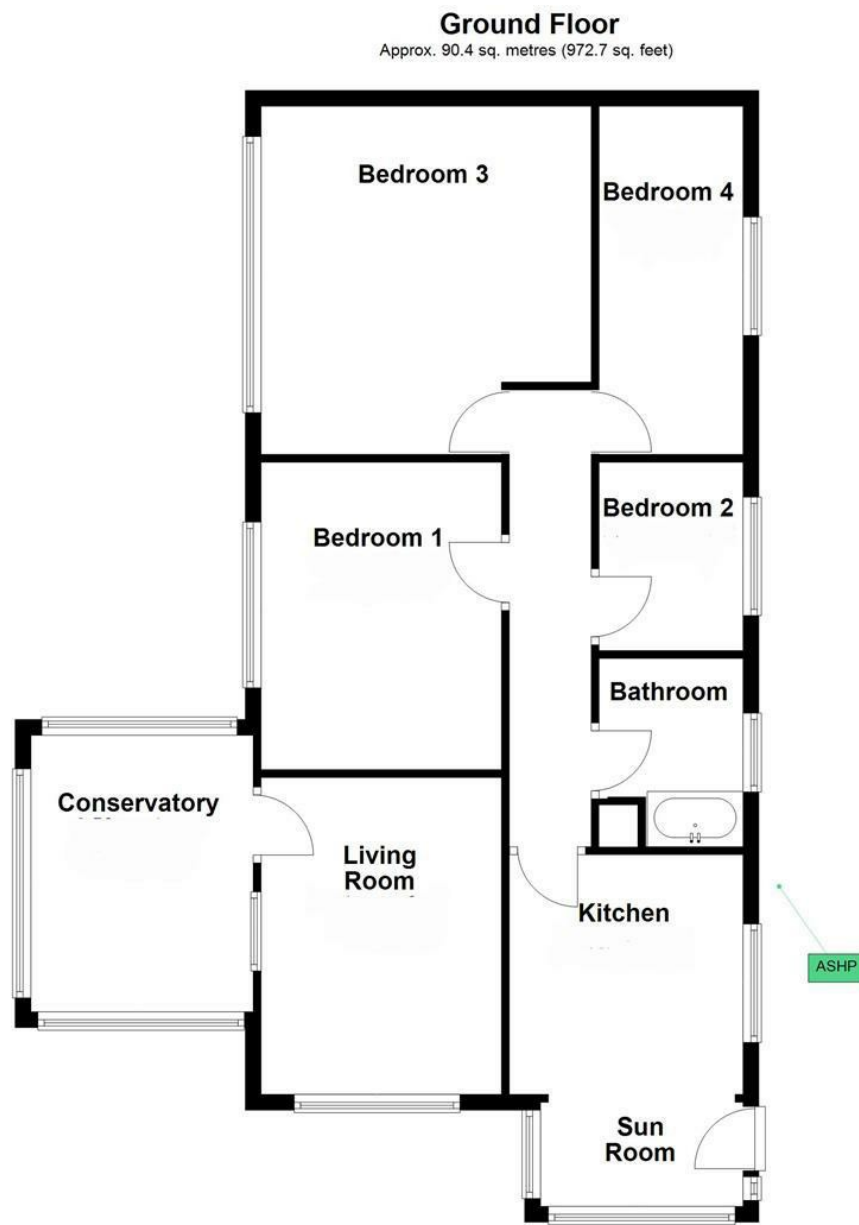
PROOF OF FINANCE - PURCHASERS

Prior to agreeing a sale, we will require proof of financial ability to purchase which will include an agreement in principle for a mortgage and/or proof of cash funds.

DATE DETAILS PREPARED.

8th October 2025





Total area: approx. 90.4 sq. metres (972.7 sq. feet)



Energy Efficiency Rating		
	Current	Potential
Very energy efficient - lower running costs		
(92 plus) A		
(81-91) B		
(69-80) C	73	78
(55-68) D		
(39-54) E		
(21-38) F		
(1-20) G		
Not energy efficient - higher running costs		
England & Wales		EU Directive 2002/91/EC

These particulars are set out as a general outline in accordance with the Property Misdescriptions Act (1991) only for the guidance of intending purchasers or lessees, and do not constitute any part of an offer or contract. Details are given without any responsibility, and any intending purchasers, lessees or third parties should not rely on them as statements or representations of fact, but must satisfy themselves by inspection or otherwise as to the correctness of each of them. We have not carried out a structural survey and the services, appliances and specific fittings have not been tested. All photographs, measurements, floor plans and distances referred to are given as a guide only and should not be relied upon for the purchase of carpets or any other fixtures or fittings. Gardens, roof terraces, balconies and communal gardens as well as tenure and lease details cannot have their accuracy guaranteed for intending purchasers. Lease details, service ground rent (where applicable) are given as a guide only and should be checked and confirmed by your solicitor prior to exchange of contracts.



Christophers Estate Agents

5 Wendron Street, Helston, TR13 8PT

01326 565566 | property@christophers.uk.com | christophers.uk.com

CHRISTOPHERS
ESTATE AGENTS